

ADDITIONAL NOTES:

This is a Typical Site Plan for a Grease Interceptor and Piping Layout, and is for informational purposes only. Each owner must submit a detailed Site Plan, Piping layout and additional information required by LRWRA. Once the owner's submittal is complete, LRWRA will issue a Grease Interceptor sizing and approval form. The Grease Interceptor must be accessible for inspection and cleaning at all times. If the Grease Interceptor is to be placed in a parking area, Then Bollards must be constructed to prevent parking on top of the manhole lids. Refer to LRWRA FOG 1.4, fig 6 for details.

Notes:
All changes/revisions/etc. must be approved by the LRWRA Director of Engineering or his designee. This drawing is the property of the Little Rock Water Reclamation Authority and is not to be modified in whole or part. It is to be used from project(s) associated with Little Rock Reclamation Authority.

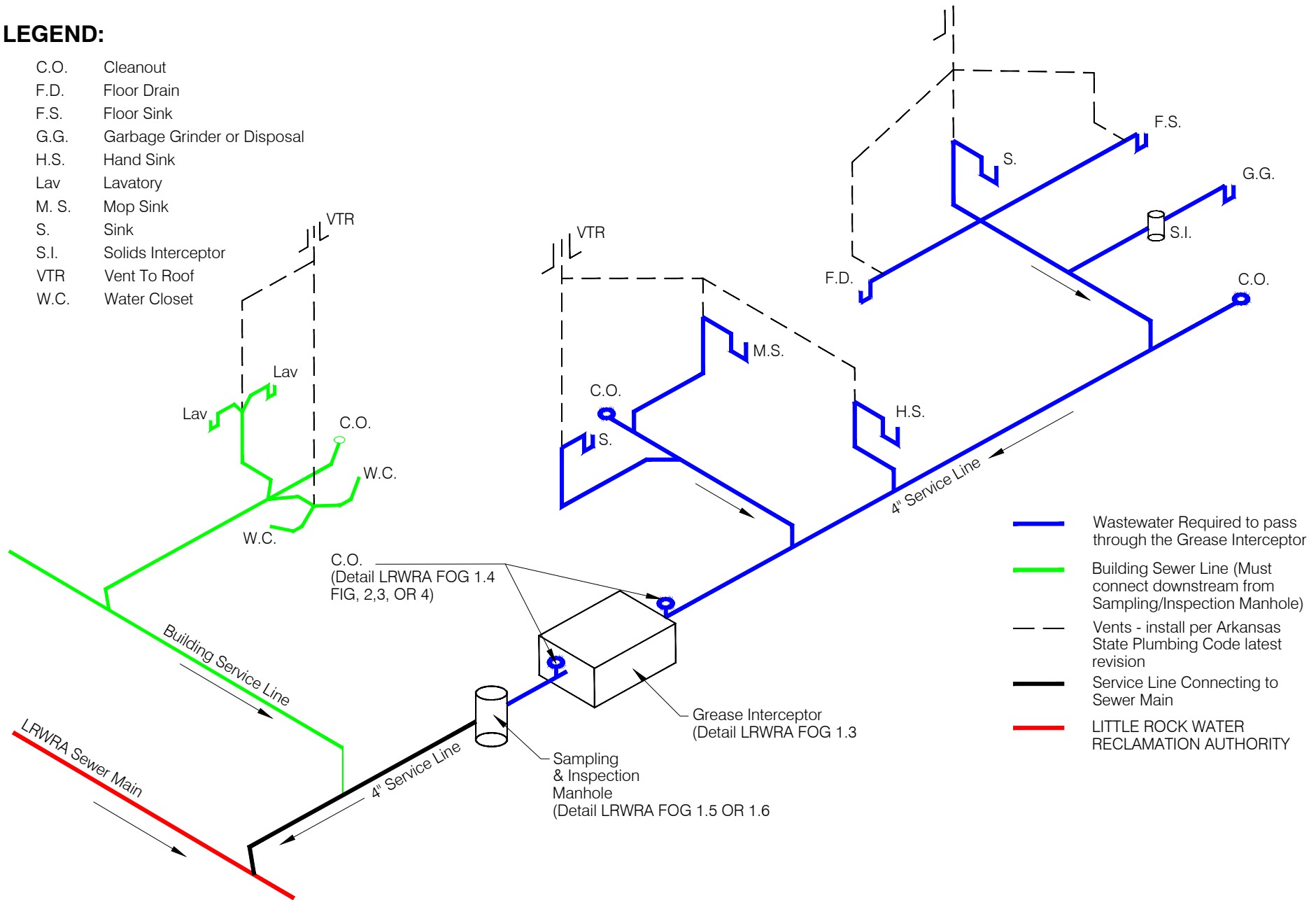


**EXAMPLE: SITE PLAN & PIPING LAYOUT
GREASE INTERCEPTOR**

FOG DETAIL	
1.1	
ENG. TECH: A. Stallings	
DATE: 2-7-2019	
CAD FILE: FOG 1.1	

LEGEND:

- C.O. Cleanout
- F.D. Floor Drain
- F.S. Floor Sink
- G.G. Garbage Grinder or Disposal
- H.S. Hand Sink
- Lav Lavatory
- M. S. Mop Sink
- S. Sink
- S.I. Solids Interceptor
- VTR Vent To Roof
- W.C. Water Closet



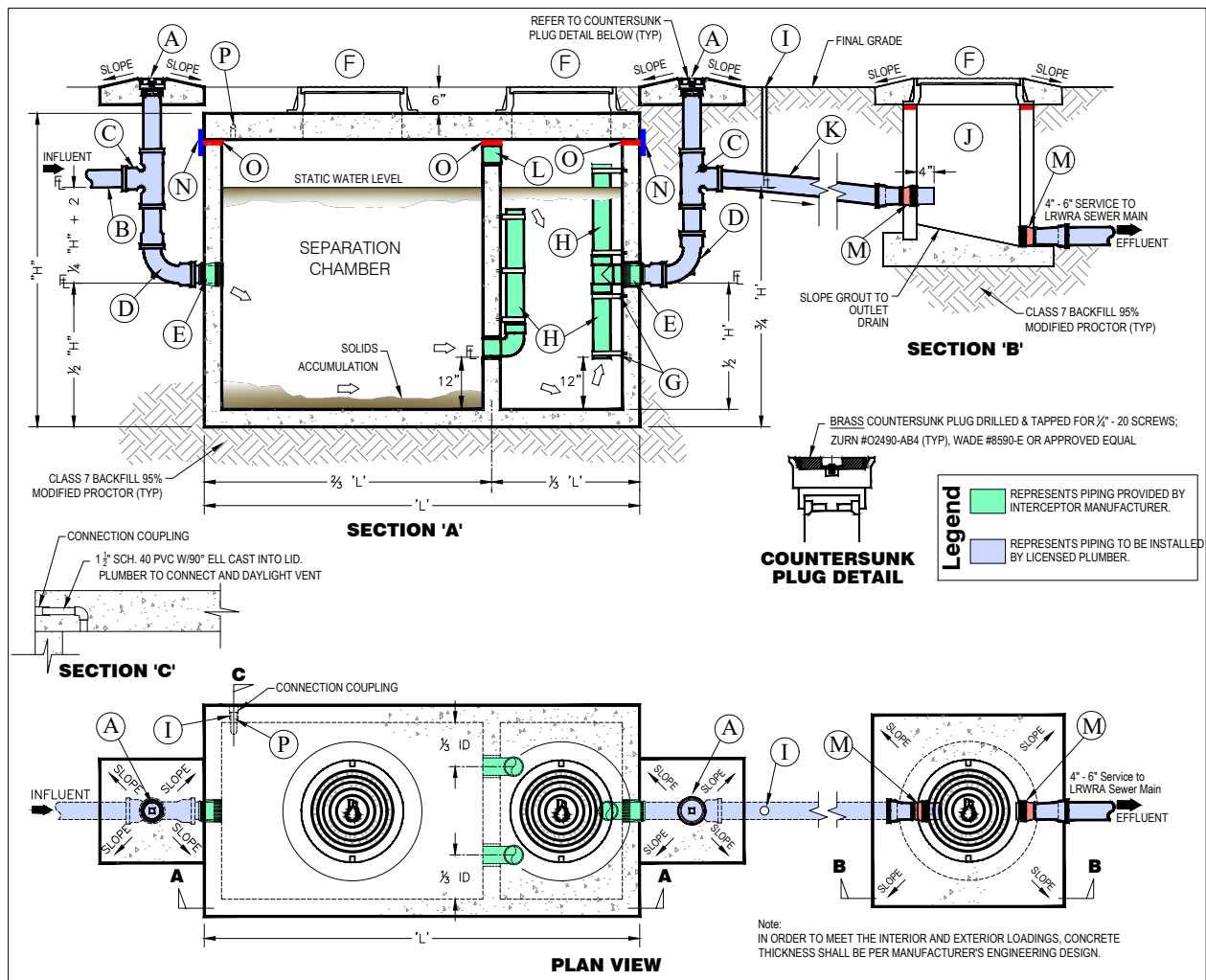
- Wastewater Required to pass through the Grease Interceptor
- Building Sewer Line (Must connect downstream from Sampling/Inspection Manhole)
- - - Vents - install per Arkansas State Plumbing Code latest revision
- Service Line Connecting to Sewer Main
- LITTLE ROCK WATER RECLAMATION AUTHORITY

Notes:
 All changes/revisions/etc. must be approved by the LRWRA Director of Engineering or his designee.
 This drawing is the property of the Little Rock Water Reclamation Authority and is not to be modified in whole or part. It is to be used from project(s) associated with Little Rock Reclamation Authority.



EXAMPLE : PLUMBING RISER DIAGRAM WHEN GREASE INTERCEPTORS ARE USED

FOG DETAIL
1.2
ENG. TECH: A. Stallings
DATE: 2-7-2019
CAD FILE: FOG 1.2



- | | |
|--|--|
| (A) 4" X 4" CLEANOUT & PAD - SEE ADDITIONAL NOTE 6. | (J) SAMPLING/INSPECTION MH - REFER TO LRWRA FOG 1.5 OR 1.6 FOR DETAILS. |
| (B) 4" MIN. | (K) 4" MIN. CIP TO SAMPLING/INSPECTION MH - MIN. SLOPE 1/8" PER FOOT. |
| (C) 4" MIN. TEE. | (L) 4" SCHEDULE 80 SOLVENT WELD IN TANK VENT PIPE. |
| (D) 4" MIN. QUARTER BEND. | (M) INSERTA TEE. REFER TO DRAWING LRWRA FOG 1.4, FIG. 5 FOR DETAILS. |
| (E) KOR-N-SEAL BOOT - SEE ADDITIONAL NOTE 4. | (N) JOINT WRAP IS TO BE INSTALLED AROUND ALL EXTERIOR JOINTS - REQUIRED. REFER TO LRWRA FOG 1.8 FOR DETAIL. |
| (F) LRWRA STANDARD 24" MH FRAMES & LIDS - SEE ADDITIONAL NOTE 1. | (O) ADEKA SEALANT (OR APPROVED EQUAL) IS TO BE USED BETWEEN INTERCEPTOR TOP AND WALL - REQUIRED. |
| (G) STAINLESS STEEL BANDS & BOLTS - SEE ADDITIONAL NOTE 2. | (P) VENT / ELBOW SHALL BE 1 1/2" SCH. 40 PVC CAST INTO LID. LOCATION OF VENT IN LID TO BE DETERMINED BY SITE CONDITIONS. |
| (H) 4" SCHEDULE 80 PVC SOLVENT WELD - SEE ADDITIONAL NOTE 2. | |
| (I) VENT - SEE ADDITIONAL NOTE 5. | |

ADDITIONAL NOTES:

- ALL GREASE INTERCEPTORS MUST HAVE TWO COMPARTMENTS. STANDARD MANHOLE FRAMES AND LIDS ARE TO BE INSTALLED CENTERED ON EACH COMPARTMENT AND TO GRADE PER LRWRA SPECIFICATIONS. REFER TO LRWRA FOG 1.12 FOR DETAILS.
- ALL GREASE INTERCEPTOR IN-TANK PIPING MUST BE 4" SCHEDULE 80 PVC SOLVENT WELD, AND IS TO BE SECURED AT THE TOP AND BOTTOM WITH STAINLESS STEEL BANDS AND BOLTS OR PRE-APPROVED EQUAL.
- ALL GREASE INTERCEPTORS MUST BE ACCESSIBLE FOR INSPECTION, AND CLEANING AT ALL TIMES.
- KOR-N-SEALS OR APPROVED EQUAL BOOTS ARE REQUIRED WHERE PIPING PASSES THROUGH THE EXTERIOR INTERCEPTOR WALLS. REFER TO LRWRA FOG 1.4, FIG. 1 FOR DETAIL.
- VENTS ARE TO BE INSTALLED PER ARKANSAS STATE PLUMBING CODE LATEST REVISION.
- CLEANOUTS USED ON THE EXTERIOR PORTION OF TANKS SHALL BE 4" X 4" COMBINATION CLEANOUTS W/BRASS COUNTERSUNK PLUGS DRILLED AND TAPPED FOR 1/4" - 20 SCREWS. REFER TO LRWRA FOG 1.4, FIG. 2, 3, AND 4 FOR CLEANOUT AND PAD DETAILS.
- THIS DRAWING IS FOR INFORMATIONAL PURPOSES ONLY. EACH OWNER MUST SUBMIT A DETAILED SITE AND FLOOR PLAN THAT SHOW ALL PLUMBING FIXTURES AND THEIR CORRESPONDING PIPING LAYOUTS. EACH OWNER MUST SUBMIT AN ISOMETRIC PLUMBING RISER DIAGRAM THAT SHOWS THE GREASE WASTE PIPING, AS WELL AS THE OTHER SANITARY BUILDING SEWER DRAINS AND ASSOCIATED PIPING. LRWRA MAY REQUIRE ADDITIONAL INFORMATION AS NEEDED TO EVALUATE THE OWNER'S SUBMITTAL BEFORE FINAL APPROVAL WILL BE GRANTED.
- ONCE THE OWNER'S SUBMITTAL IS COMPLETE, LRWRA WILL ISSUE A GREASE INTERCEPTOR SIZING AND APPROVAL FORM.
- THE OWNER MUST PURCHASE A GREASE INTERCEPTOR FROM A MANUFACTURER THAT HAS BEEN PRE-APPROVED BY THE LITTLE ROCK WATER RECLAMATION AUTHORITY.

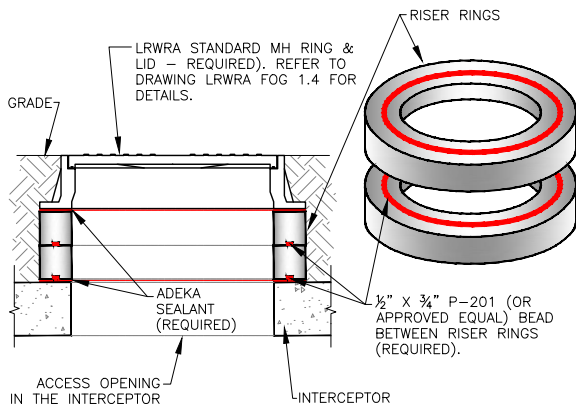
Notes:
All changes/revisions/etc. must be approved by the LRWRA Director of Engineering or his designee.
This drawing is the property of the Little Rock Water Reclamation Authority and is not to be modified in whole or part. It is to be used from project(s) associated with Little Rock Reclamation Authority.



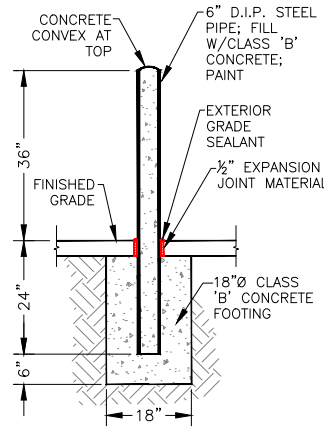
STANDARD ONE TANK - TWO COMPARTMENT GREASE INTERCEPTOR DETAILS

FOG DETAIL
1.3

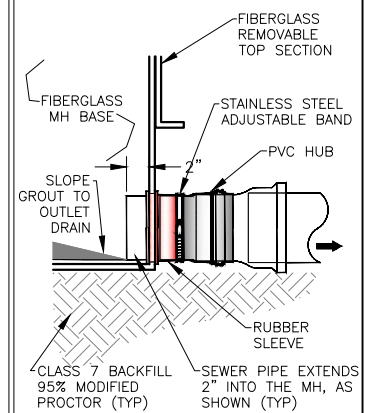
ENG. TECH: A. Stallings
DATE: 2-7-2019
CAD FILE: FOG 1.3



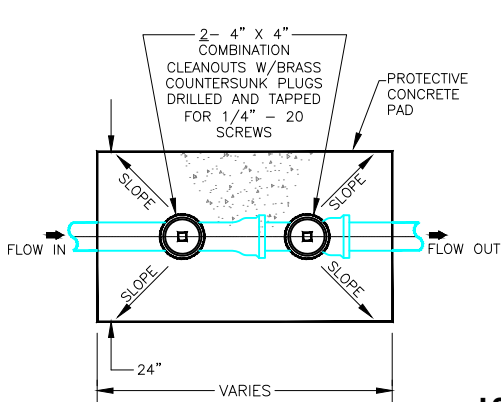
RISER RING DETAILS
FIGURE 7



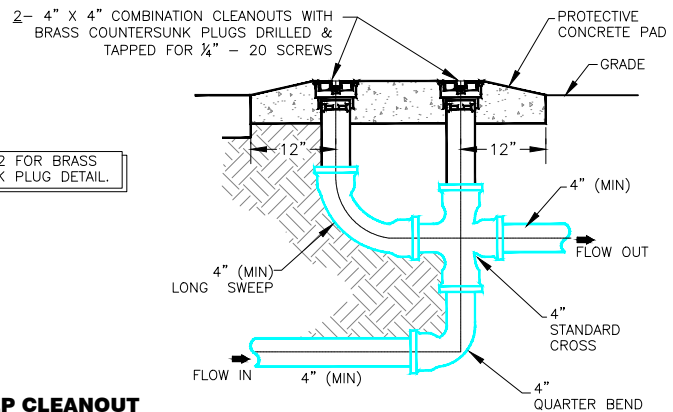
TYPICAL BOLLARD
FIGURE 6



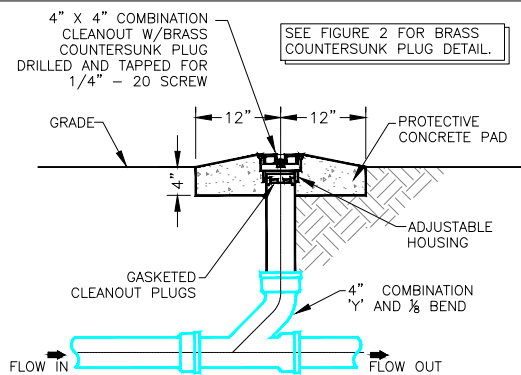
INSERTA TEE DETAIL
FIGURE 5



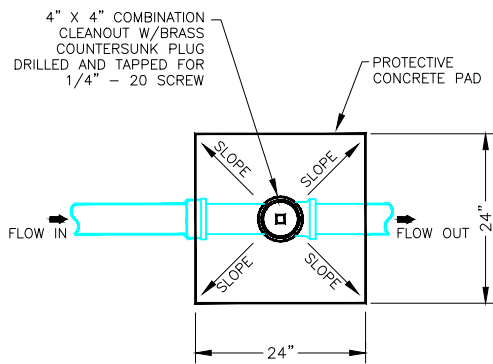
LONG SWEEP CLEANOUT
FIGURE 4



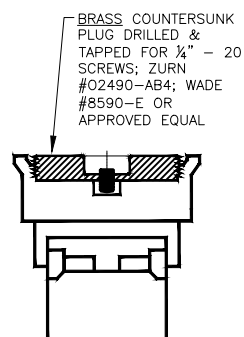
SECTION



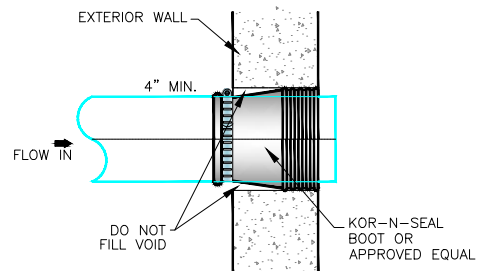
SECTION



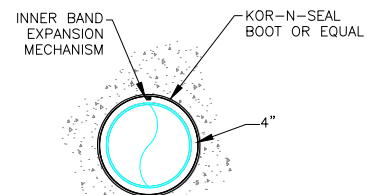
ONE-WAY CLEANOUT
FIGURE 3



COUNTERSUNK PLUG
FIGURE 2



SECTION



INTERIOR VIEW

BOOT DETAIL
FIGURE 1

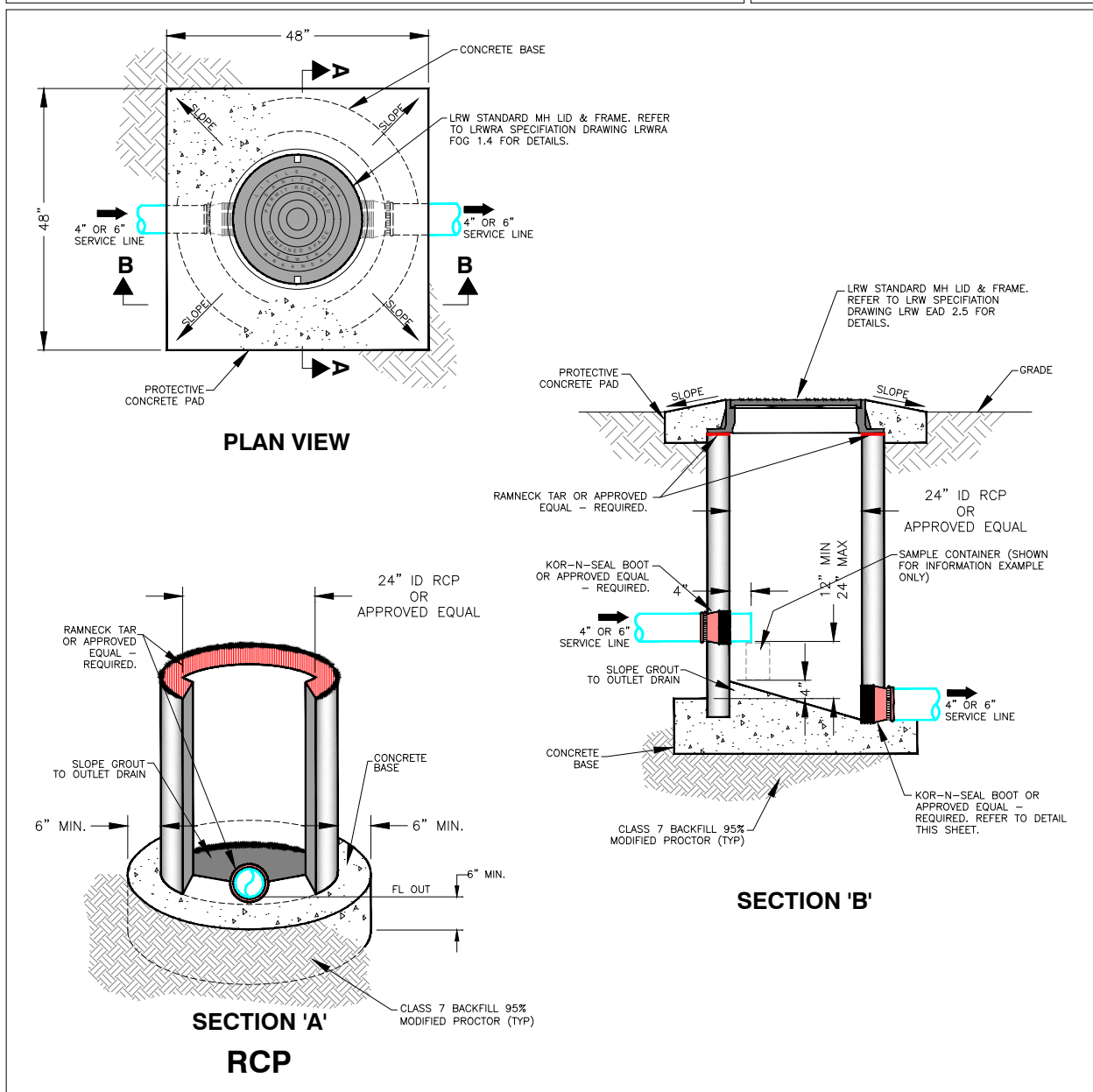
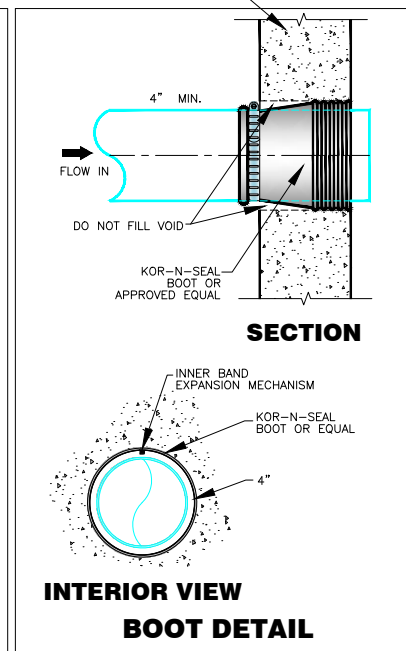
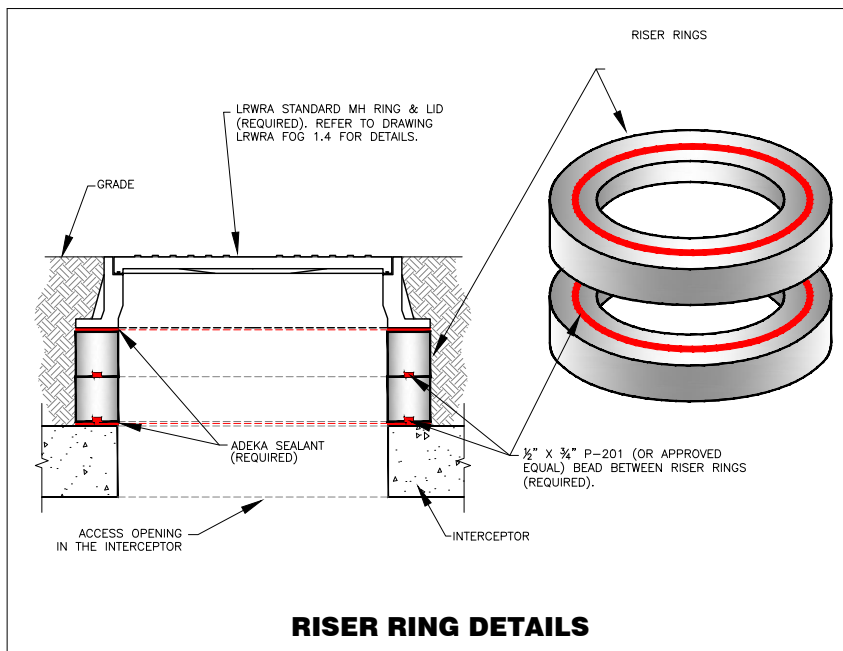
Notes:
All changes/revisions/etc. must be approved by the LRWRA Director of Engineering or his designee.
This drawing is the property of the Little Rock Water Reclamation Authority and is not to be modified in whole or part. It is to be used from project(s) associated with Little Rock Reclamation Authority.



**TRAP CONTROL
& MISCELLANEOUS DETAILS**

**FOG DETAIL
1.4**

ENG. TECH: A. Stallings
DATE: 2-8-2019
CAD FILE: FOG 1.4

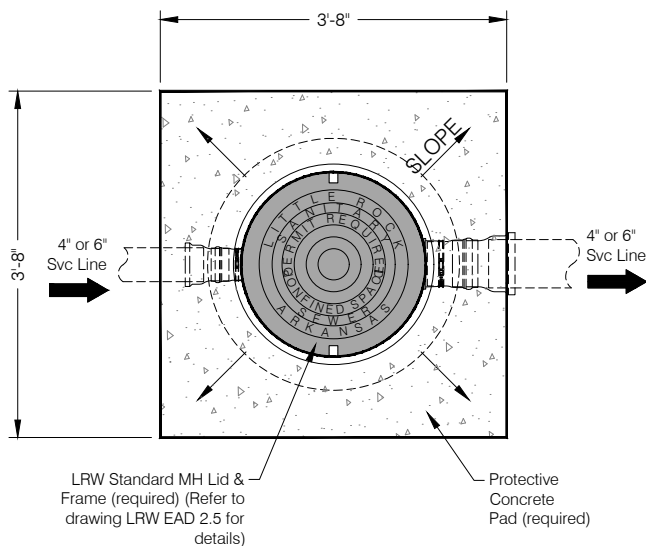
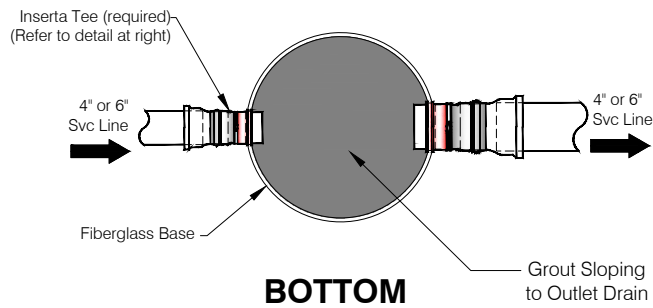


Notes:
 All changes/revisions/etc. must be approved by the LRWRA Director of Engineering or his designee.
 This drawing is the property of the Little Rock Water Reclamation Authority and is not to be modified in whole or part. It is to be used from project(s) associated with Little Rock Reclamation Authority.

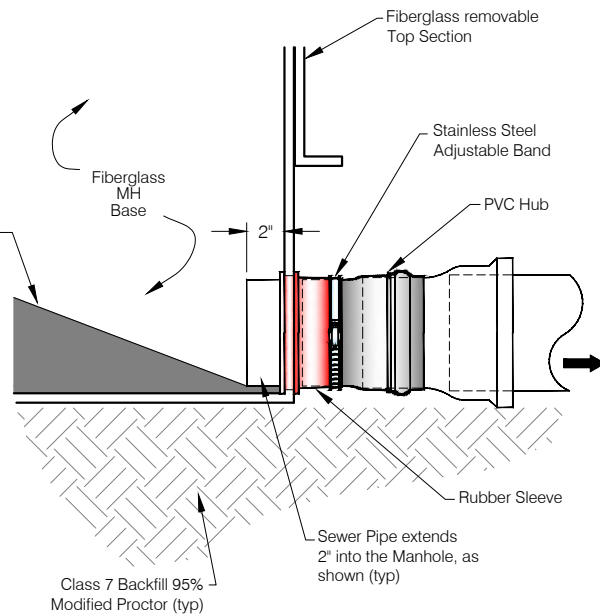


CONCRETE SAMPLING / INSPECTION MANHOLE DETAILS

FOG DETAIL
1.5
ENG. TECH: A. STALLINGS
DATE: 2-8-2019
CAD FILE: FOG 1.5



PLAN VIEW

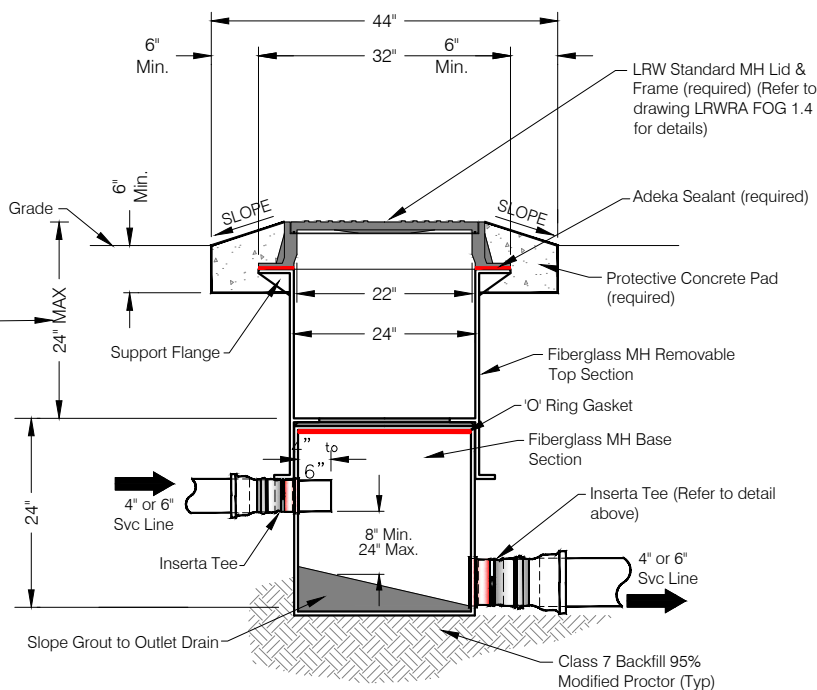


INSERTA TEE DETAIL

Inserta Tee 3-piece Compression Fit Service Connection (or approved equal) consisting of the following: PVC Hub, Rubber Sleeve, and Stainless Steel Band.

- 2-ft Manholes shall be manufactured from commercial grade polyester resin or other suitable polyester or vinyl, ester resins, with fiberglass reinforcements.
- Shall consist of two sections, a removable top section and a base section.
- Manufactured to meet or exceed all specifications of A.S.T.M. D-3753 latest edition.
- Base section shall include a gasket system to provide a seal between the top and base sections.

IF MORE THAN 24" USE 4" CONCRETE MANHOLE



SECTION

Notes:
All changes/revisions/etc. must be approved by the LRWRA Director of Engineering or his designee.
This drawing is the property of the Little Rock Water Reclamation Authority and is not to be modified in whole or part. It is to be used from project(s) associated with Little Rock Reclamation Authority.

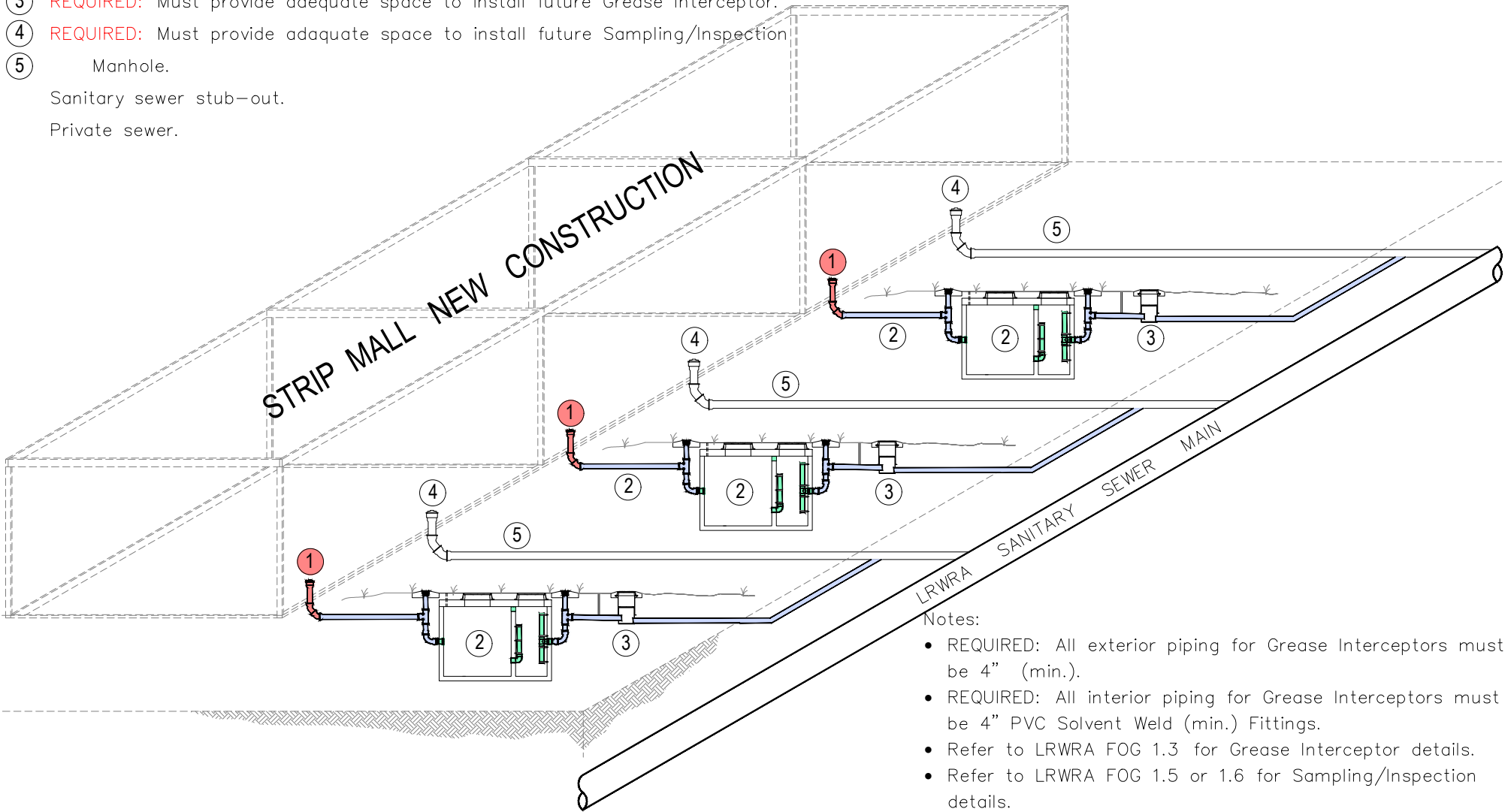


**FIBERGLAS SAMPLING / INSPECTION
MANHOLE DETAILS**

**FOG DETAIL
1.6**

ENG. TECH: A.STALLINGS
DATE: 2-8-2019
CAD FILE: xFOG 1.6

- ① **REQUIRED:** Stub-out must be provided for future grease waste line to Grease
 - ② Interceptor.
 - ③ **REQUIRED:** Must provide adequate space to install future Grease Interceptor.
 - ④ **REQUIRED:** Must provide adequate space to install future Sampling/Inspection
 - ⑤ Manhole.
- Sanitary sewer stub-out.
Private sewer.



Notes:

- **REQUIRED:** All exterior piping for Grease Interceptors must be 4" (min.).
- **REQUIRED:** All interior piping for Grease Interceptors must be 4" PVC Solvent Weld (min.) Fittings.
- Refer to LRWRA FOG 1.3 for Grease Interceptor details.
- Refer to LRWRA FOG 1.5 or 1.6 for Sampling/Inspection details.
- Refer to LRWRA FOG 1.4, figure(s) 2,3,& 4 for Cleanout details.

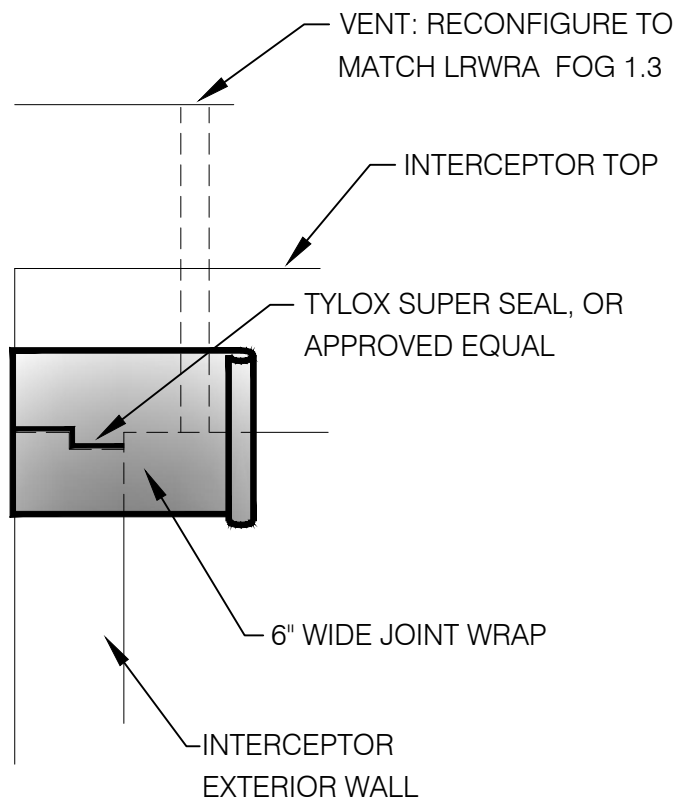
Notes:

All changes/revisions/etc. must be approved by the LRWRA Director of Engineering or his designee. This drawing is the property of the Little Rock Water Reclamation Authority and is not to be modified in whole or part. It is to be used from project(s) associated with Little Rock Reclamation Authority.



**NEW CONSTRUCTION FLEX SPACE / STRIP MALL
EXAMPLE: PLUMBING CONFIGURATION**

FOG DETAIL
1.7
ENG. TECH: A. STALLINGS
DATE: 2-8-2019
CAD FILE: FOG 1.7



NOTES:

JOINT WRAP TO BE USED:

- ON OUTSIDE ALL COLD JOINTS.
- ON THE OUTSIDE ALL INTERCEPTOR JOINTS.

Notes:

All changes/revisions/etc. must be approved by the LRWRA Director of Engineering or his designee. This drawing is the property of the Little Rock Water Reclamation Authority and is not to be modified in whole or part. It is to be used from project(s) associated with Little Rock Reclamation Authority.



JOINT WRAP DETAILS

FOG DETAIL
1.8

ENG. TECH: A. STALLINGS
DATE: 2-11-2019
CAD FILE: FOG 1.8