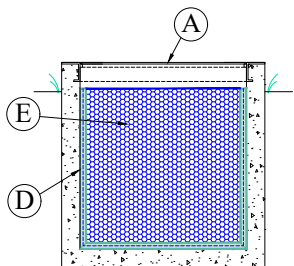


PLUMBING RISER



SECTION '2'

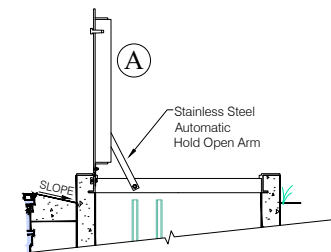
ADDITIONAL NOTES:

1. AREA OF FRAME IN CONTACT WITH CONCRETE IS TO BE PAINTED WITH BITUMINOUS COATING.
2. IN THE EVENT THE INTERCEPTOR IS TO BE LOCATED IN A PARKING AREA, STEEL BOLLARDS ARE TO BE USED TO PROTECT THE INTERCEPTOR AND LID. REFER TO DRAWING LRWRA FOG 1.4, FIG. 6 FOR DETAIL.

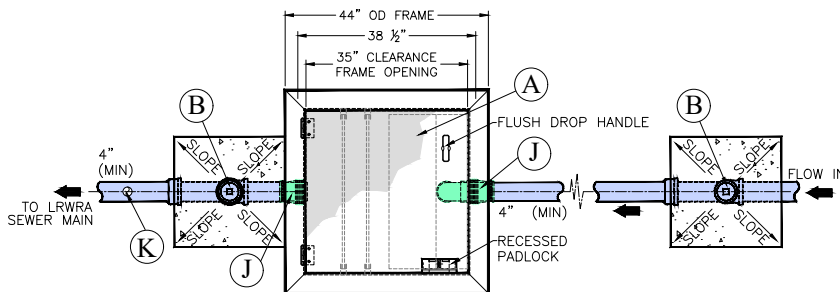
- (A) STAINLESS STEEL FABRICATED LID WITH LOCKING MECHANISM.
- (B) 4" X 4" COMBINATION C.O. REFER TO DRAWING LRWRA FOG 1.4 FIG 2, 3 AND 4 FOR DETAILS.
- (C) 4" COMBINATION "Y" AND 1/8" BEND. REFER TO DRAWING LRWRA FOG 1.4, FIG 3 FOR DETAILS.
- (D) TWO PREFABRICATED ALUMINUM CHANNEL UNITS (TO HOLD STAINLESS STEEL MESH SCREENS IN PLACE) ARE TO BE INSTALLED AND BOLTED TO THE INTERCEPTOR WALLS (AS SHOWN) WITH STAINLESS STEEL BOLTS.
- (E) REMOVABLE STAINLESS STEEL MESH LINT SCREENS. TWO MUST BE INSTALLED. LINT SCREEN OPENINGS ARE TO BE NO MORE THAN 1/2" MAX.
- (F) REMOVABLE STAINLESS STEEL MESH BASKET. THE MESH BASKET OPENINGS ARE TO BE NO MORE THAN 1/2" MAX.
- (H) 4" QUARTER BEND.
- (I) 4" SCHEDULE 80 PVC SOLVENT WELD PIPING INSIDE INTERCEPTOR.
- (J) KOR-N-SEAL BOOT OR APPROVED EQUAL - REQUIRED WHERE PIPING PENETRATES THE INTERCEPTOR EXTERIOR WALLS. REFER TO DRAWING LRWRA FOG 1.4 FIG. 1 FOR DETAIL.
- (K) VENTS ARE TO BE INSTALLED PER THE LATEST REVISION OF THE ARKANSAS STATE PLUMBING CODE.

REPRESENTS PIPING PROVIDED BY INTERCEPTOR MANUFACTURER.

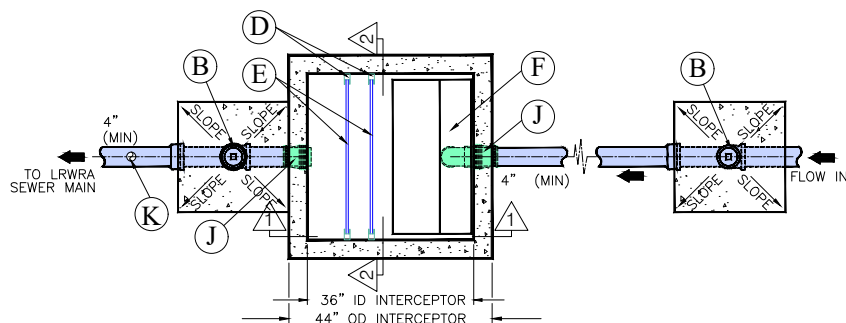
REPRESENTS PIPING TO BE INSTALLED BY LICENSED PLUMBER.



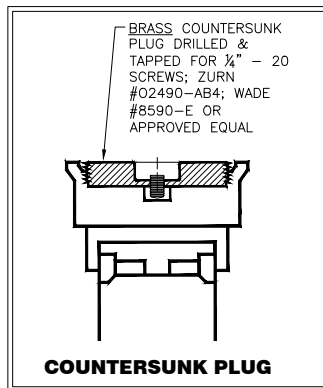
SECTION '1' WITH LID IN OPEN POSITION



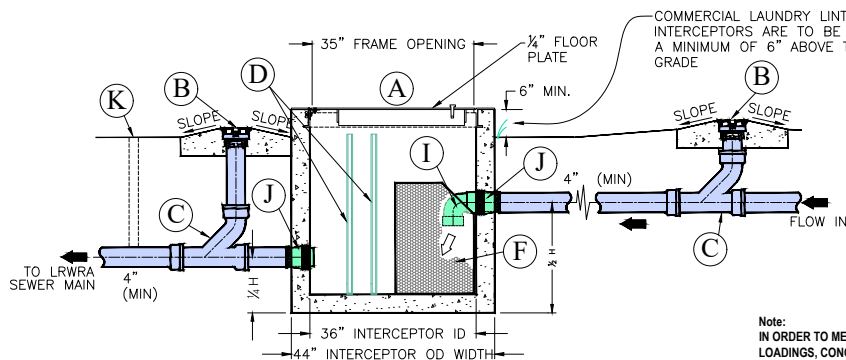
PLAN VIEW WITH LID



PLAN VIEW BEFORE THE LID IS INSTALLED



COUNTERSUNK PLUG



SECTION '1' WITH LID IN CLOSED POSITION

Note:
IN ORDER TO MEET THE INTERIOR AND EXTERIOR LOADINGS, CONCRETE THICKNESS SHALL BE PER MANUFACTURER'S ENGINEERING DESIGN.

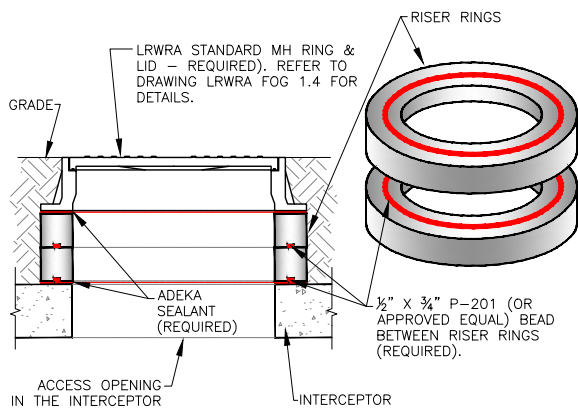
Notes: All changes/revisions/etc. must be approved by the LRWRA Director of Engineering or his designee.
This drawing is the property of the Little Rock Water Reclamation Authority and is not to be modified in whole or part. It is to be used from project(s) associated with Little Rock Reclamation Authority.



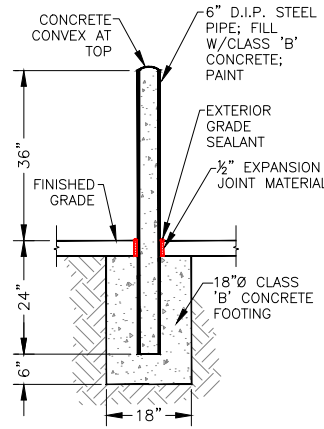
TYPICAL COMMERCIAL LAUNDRY LINT INTERCEPTOR DETAILS

FOG DETAIL 2.5

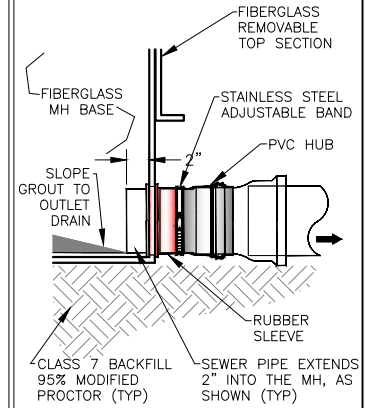
ENG. TECH: A. STALLINGS
DATE: 2-+11-2019
CAD FILE: FOG 2.5



RISER RING DETAILS
FIGURE 7

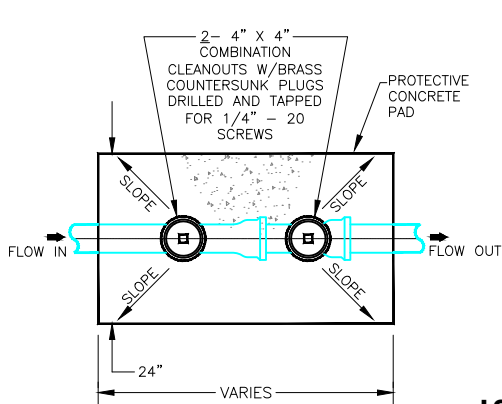


TYPICAL BOLLARD
FIGURE 6

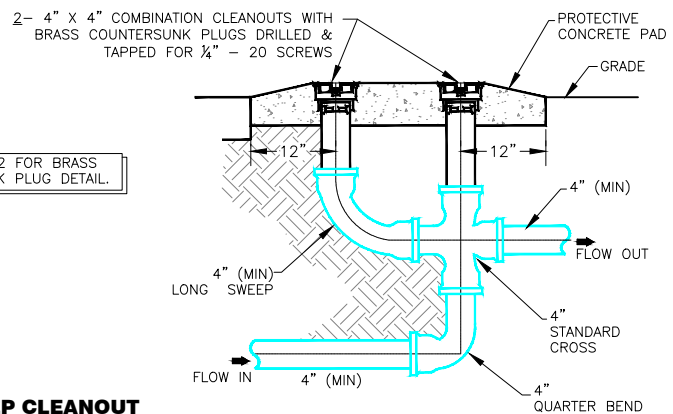


INSERTA TEE 3-PIECE COMPRESSION FIT SERVICE CONNECTION (OR APPROVED EQUAL) CONSISTING OF THE FOLLOWING: PVC HUB, RUBBER SLEEVE, AND STAINLESS STEEL BAND.

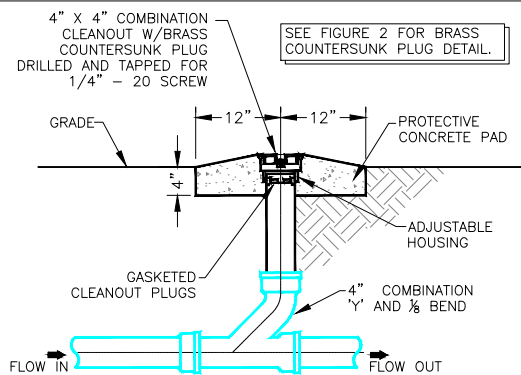
INSERTA TEE DETAIL
FIGURE 5



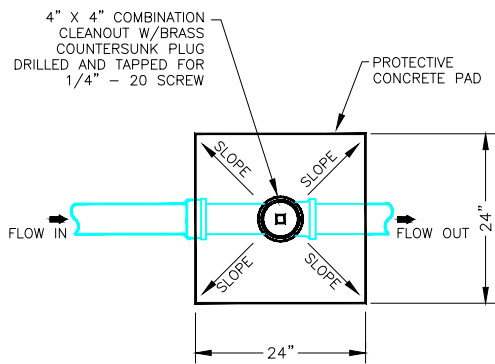
LONG SWEEP CLEANOUT
FIGURE 4



SECTION

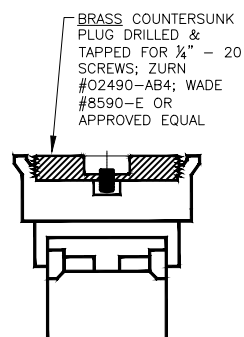


SECTION

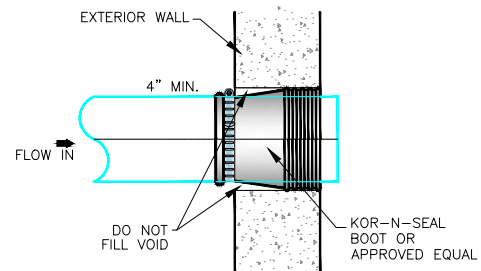


PLAN VIEW

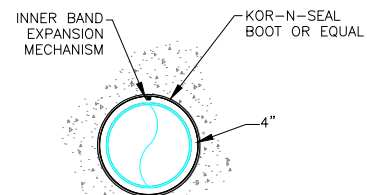
ONE-WAY CLEANOUT
FIGURE 3



COUNTERSUNK PLUG
FIGURE 2



SECTION



INTERIOR VIEW

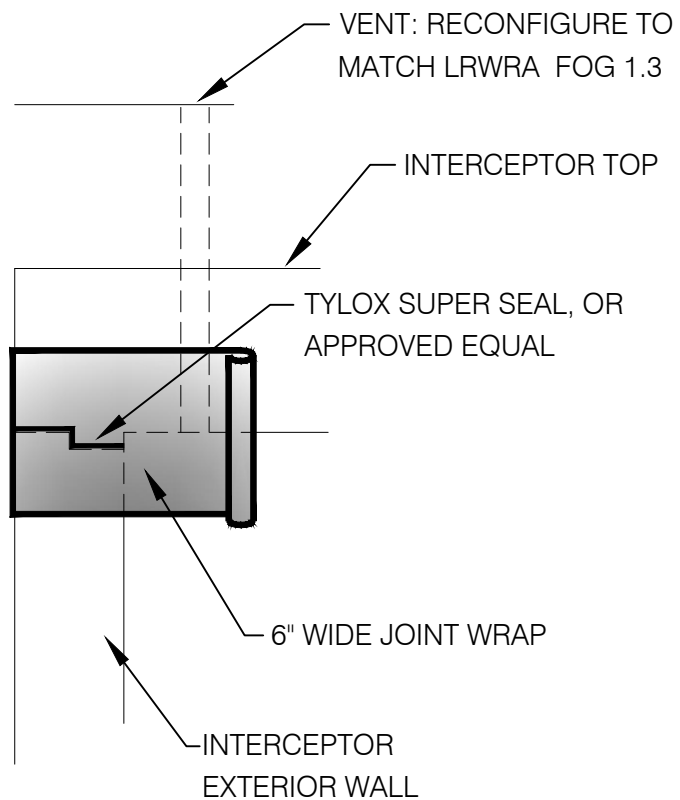
BOOT DETAIL
FIGURE 1

Notes:
All changes/revisions/etc. must be approved by the LRWRA Director of Engineering or his designee.
This drawing is the property of the Little Rock Water Reclamation Authority and is not to be modified in whole or part. It is to be used from project(s) associated with Little Rock Reclamation Authority.



TRAP CONTROL & MISCELLANEOUS DETAILS

FOG DETAIL	
1.4	
ENG. TECH: A. Stallings	
DATE: 2-8-2019	
CAD FILE: FOG 1.4	



NOTES:

JOINT WRAP TO BE USED:

- ON OUTSIDE ALL COLD JOINTS.
- ON THE OUTSIDE ALL INTERCEPTOR JOINTS.

Notes:

All changes/revisions/etc. must be approved by the LRWRA Director of Engineering or his designee. This drawing is the property of the Little Rock Water Reclamation Authority and is not to be modified in whole or part. It is to be used from project(s) associated with Little Rock Reclamation Authority.



JOINT WRAP
DETAILS

FOG DETAIL
1.8

ENG. TECH: A. STALLINGS
DATE: 2-11-2019
CAD FILE: FOG 1.8