



LITTLE ROCK  
**Water Reclamation  
 Authority** ONE WATER.  
 ONE FUTURE.

[lrwra.com/dontflush](http://lrwra.com/dontflush)



**Activity Booklet/  
 Informational Brochure**

# WORD SEARCH

Learn about the small ways you can have a BIG impact on our shared pipelines. Search below for **things that you shouldn't flush** and a few words to help you understand why it matters!

N N D X W S H I I F E W I Q L U X W X O M M J M G  
 P G G Z G G P A F L X C F G B T R M L N W W P U E  
 L F R J R W S R I E W E L S M Z T F W D C U L F R  
 D S T N R V G V E R I L O G X Z M K R M D N Y Z K  
 T D T U P T S P Q V P T S C T O Y T Z D I T N M S  
 T U K V R R Y J B A E T S N Z K C T P H A R K C D  
 K W L Y O Q U V Y N S N I E I Z J Z I T P M Q H R  
 O W S P T C S M D G Q L T E H G O V K H E G P R T  
 G B L X E E E O O J S E U E O E H T I G R C A E J  
 V D G A C U P N D M S X A N S J N Y T Y S X I S U  
 E P I B T V V H K O E F P P L U L G L Q A A T O A  
 Z P U O J I C J J I L D L G E A N E V Z G D D U A  
 C W L K X S C W A E P M I J S T U D P H Z K Z R H  
 E X I Y D C Z A D U I S Z C T V E R O B S W I C J  
 J N R Y Y O Z T S T L H E C I B C F O T S U H E D  
 M Q S M B P E E U O L Q T W M N H A P M V T C E V  
 J I K K H T R R I J S E U D E W E N T C R K S U B  
 H R I Y T U F A P H B V S R O R R N O R O G H V O  
 Q L G G O G F B A T E B J P T O B W W Z E U D P W  
 Q P M M W R Y G P L W B F X N O C O E F P M K K C  
 P M G A G W B H E V P M P O B B I N L B P F B E V  
 D P Z V H V Q K R U B E Y E A H R L Y T A A G R I  
 A F X I V S O N E W B D E S E K U B E Y M L P P O  
 C K P B Y J P I G O T M C X B M D C P T M U Q H W  
 Y C O C W W R A I S Q T J T Y D Y D I S P O S E O

- |          |         |          |         |
|----------|---------|----------|---------|
| MEDICINE | PROTECT | RESOURCE | DIAPERS |
| DISPOSE  | PREVENT | TOILET   | TOWEL   |
| WIPES    | FLOSS   | PILLS    | WATER   |
| SEWER    | PAPER   | POOP     | HAIR    |
| TOY      | PEE     | BOW      | GUM     |





**Don't  
Flush That...  
Candy**

When you're done with your candy, drop it in the trash and not in the toilet.



**Don't  
Flush That...  
Diaper**

Diapers continue to expand when they are flushed which can clog your toilet.



**Don't  
Flush That...  
Hair**

Any hair, even your doll's hair, should be thrown in the trashcan.



**Don't  
Flush That...  
Floss**

When floss is flushed, it wraps around other waste items causing clogs and clumps in the system.



**Don't  
Flush That...  
Wipe**

Sewer pipes aren't built to process wet wipes (even flushable wipes.) Always place them in trash bins.



**Don't  
Flush That...  
Medicine**

Dispose of unused medicine at local drug take back sites. It's hard for water treatment facilities to filter medicine.



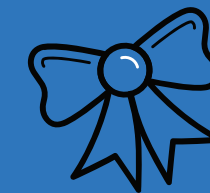
**Don't  
Flush That...  
Paper Towel**

After you dry your hands, place your paper towels in the trash can.



**Don't  
Flush That...  
Towel**

If you accidentally drop a towel in the toilet, ask an adult for help.



**Don't  
Flush That...  
Bow**

Be careful not to drop your hair bows or rubber bands in the toilet.



**Don't  
Flush That...  
Toy**

Your toilet is not a toy box. You should never flush toys down the drain.



**Find the 10 hidden objects in the image.**

You can help Little Rock Water Reclamation Authority protect the environment.

Only flush the 3 P's: **Pee, Poop and Toilet Paper.**

Visit [lrwra.com/dontflush](http://lrwra.com/dontflush) for more information.

**Tell your family and friends Don't Flush That!**