



## How Does it Work?

Once a determination has been made that a total service line replacement is necessary, the residential customer may then **request a Sewer Service Line Replacement Program application** from LRWRA.

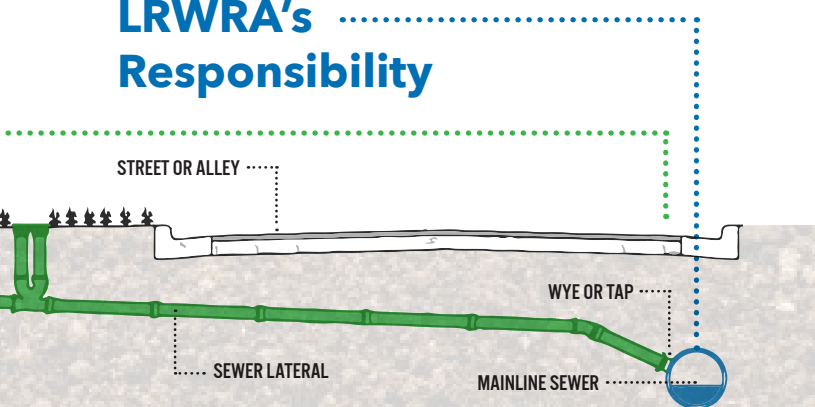
When LRWRA receives the application, a site visit will be made to determine if the residential customer's service line qualifies for this program. **If the site qualifies, customers will be advised at this time.**

The next step will be to **obtain a permit prior to the onset of work**, which will be obtained by a master plumber or the residential customer.

Upon completion, LRWRA will then make a final inspection. If the work is satisfactory, the **customer will then submit all invoices, including plumber's invoice and LRWRA permit fees**, if applicable.

**Finally, a reimbursement check, up to \$2,500, will be issued to the customer by LRWRA.**

## LRWRA's Responsibility



## DO YOUR PART.

Protect your lines. Get your **FREE** starter kit today!

Call **501.688.1490** or visit **lrwra.com/ctg**.

For additional information about SSLRP procedures, visit our website at **lrwra.com/SSLRP** or call **501.688.1426**.



LITTLE ROCK  
**Water Reclamation Authority**  
ONE WATER.  
ONE FUTURE.

11 CLEARWATER DR. LITTLE ROCK, AR 72204  
LRWRA.COM | 501. 376. 2903



LRWRA's Sewer Service Line Replacement Program received the PISCES Award for Exceptional Projects from the Environmental Protection Agency for its innovative approach to improving water quality and public health.



# SSLRP

## Sewer Service Line Replacement Program



LITTLE ROCK  
**Water Reclamation Authority**  
ONE WATER.  
ONE FUTURE.



# Your path through the process:

FROM NOTIFICATION TO REIMBURSEMENT

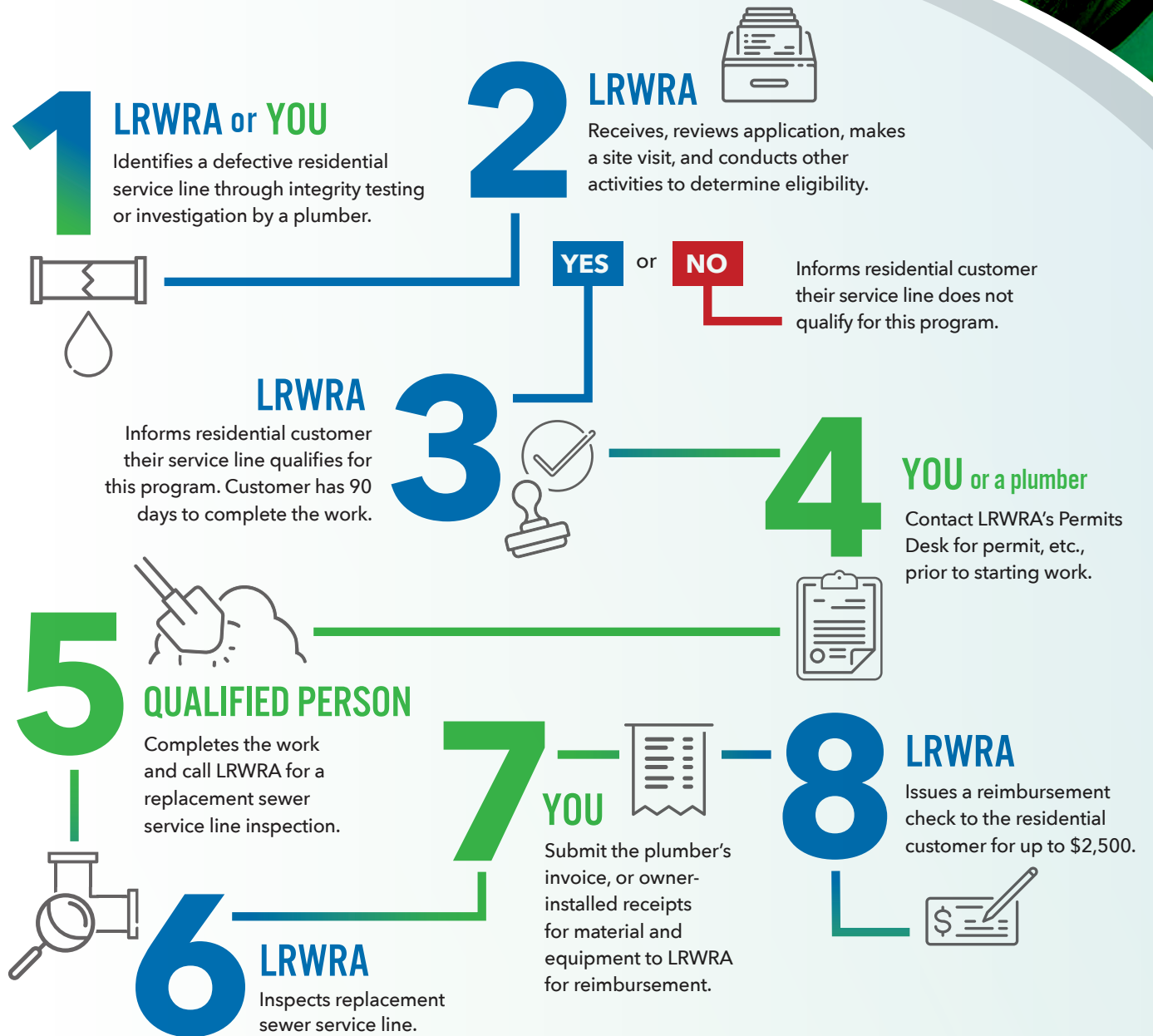


## What is SSLRP?

This **award-winning program** went into effect January 2, 2013, and was created to assist Little Rock Water Reclamation Authority (LRWRA) residential customers with the cost of total replacement of their sewer lines by **reimbursing up to a maximum of \$2,500**. This program is an ongoing effort to reduce inflow and infiltration and provide reliable service to the residents of Little Rock.

## Who's Responsible?

### Homeowner's Responsibility



For more information, call **501.688.1426** or visit [lrwra.com/SSLRP](http://lrwra.com/SSLRP).